

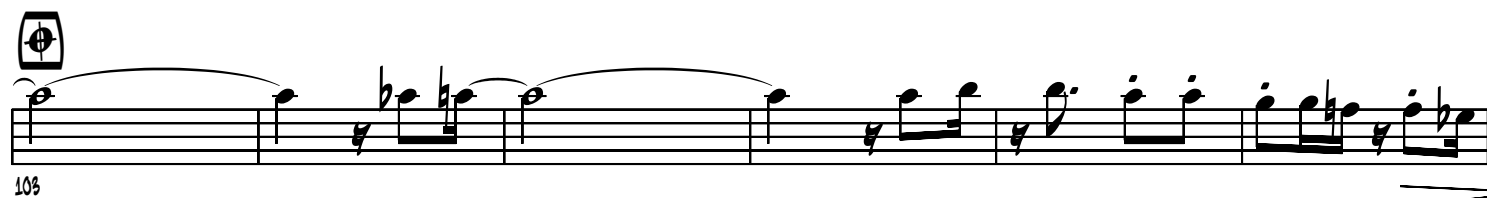
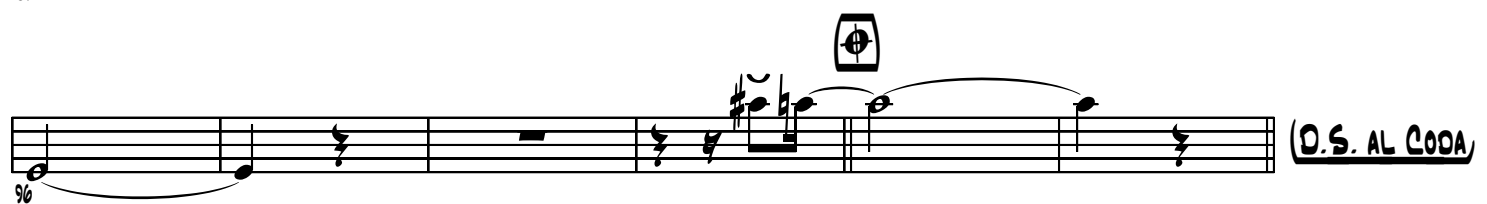
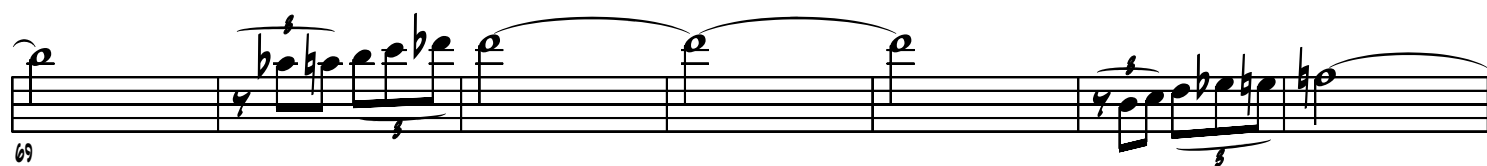
# AQUARELA DO BRASIL

Composição : Ari Barroso, 1939

ADAPTAÇÃO E ARRANJO PARA ORQUESTRA HEARTBREAKERS : DINO BARIONI

## TENOR

Musical score for Tenor part of 'Aquarela do Brasil'. The score is written in treble clef with a key signature of one sharp (F#) and a time signature of 2/4. The music is divided into measures, with measure numbers 6, 13, 20, 27, 35, 42, 49, and 56 indicated at the start of their respective staves. The score includes various musical notations such as notes, rests, and accidentals. There are also some markings in boxes: 'A' above measure 13, 'B' above measure 20, 'C' above measure 35, 'D' above measure 42, 'E' above measure 49, and 'F' above measure 56. The score ends with a double bar line.



(D.S. AL CODA)