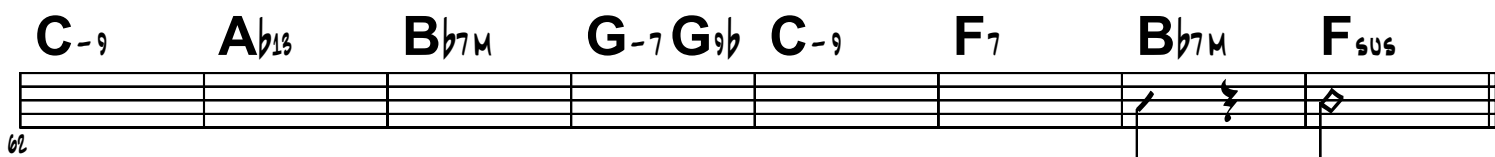
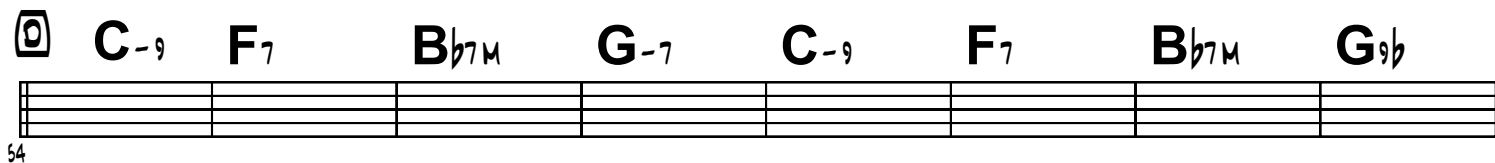
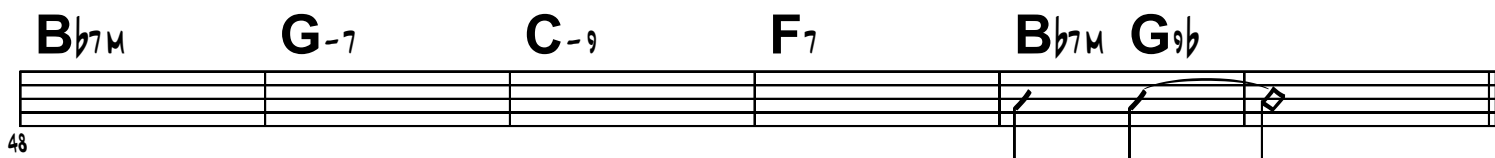
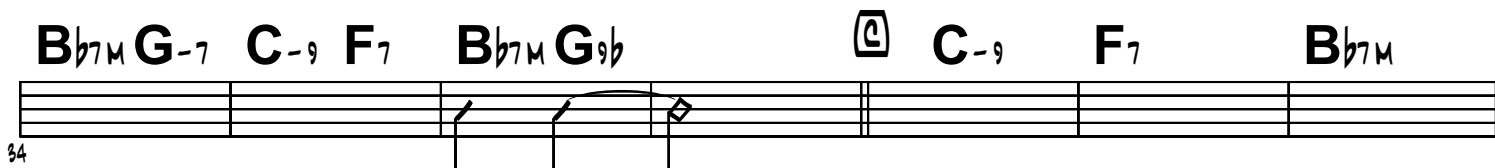
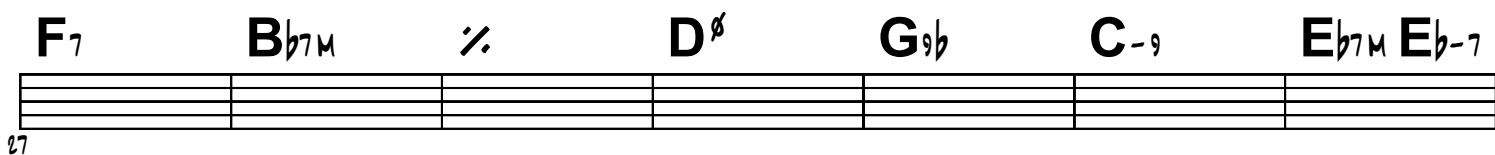
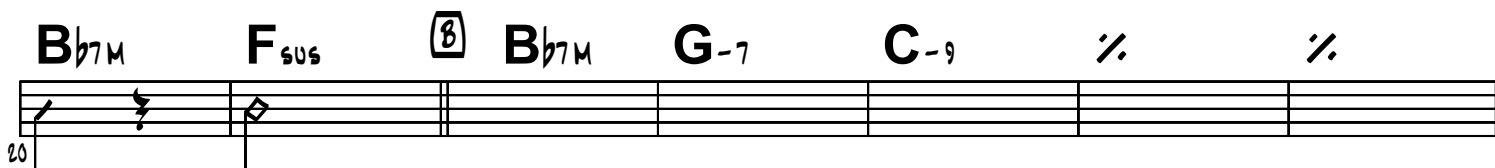
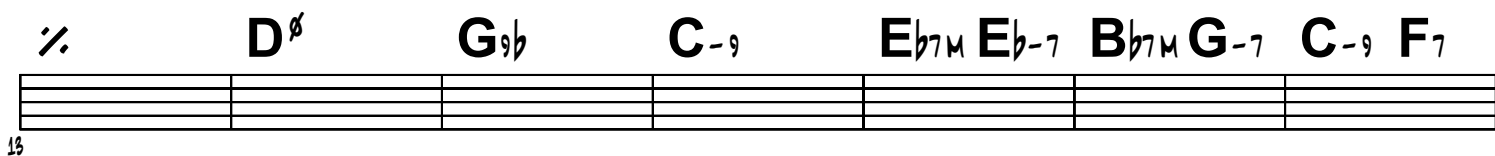
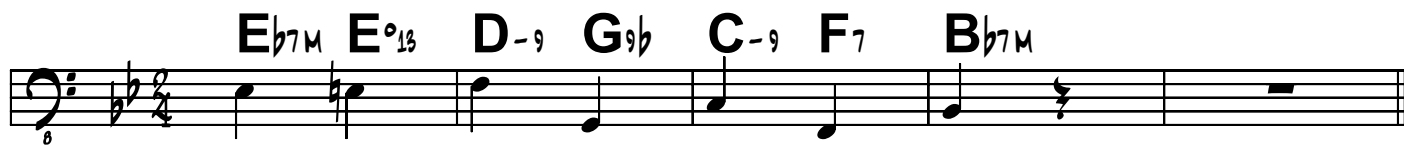


VASSOURINHA

Composição : Joana Batista e Matias da Rocha, 1889

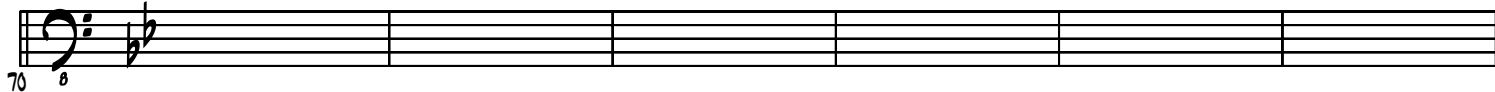
ADAPTAÇÃO E ARRANJO PARA ORQUESTRA HEARTBREAKERS : DINO BARIONI

BASS



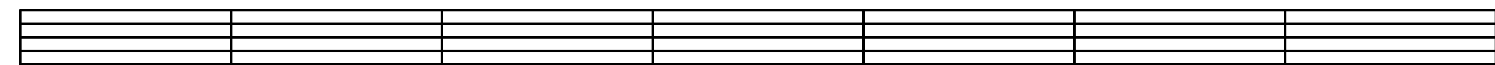
2 VASSOURINHA BASS

E **B^b7M** **G-7** **C-9** % % **F7**



70

B^b7M % **D^ø** **G^{9b}** **C-9** **E^b7M** **E^b-7** **B^b7M** **G-7**



76

C-9 **F7** **B^b7M** **F** **B^b13(#11)/A^b** **E^b4+/G**



83

G^b5+ **G^b7M/F** **E^(9b)5+**



90

E^bsus **G^bsus** **A^bsus** **B^bsus** **D^bsus** **E^b6** **D-11**



96



102



110

G^bsus **A^bsus** **B^bsus** **D^bsus** **E^b6** **B¹¹⁺7M**



116

RALL.

